

PRECISION
RELIABILITY
FLEXIBILITY



CONTENTS

Company 4

The Eickhoff strengths 6

Products 18

Management team 20

Employees 22

Commitment 26

Subsidiaries 30

Legal notes 32

AT HOME THROUGHOUT THE WORLD

Eickhoff is a globally operating family enterprise that has been based in Bochum since it was founded in 1864. Our core business: we manufacture machinery and gearing technology designed to withstand extreme conditions worldwide, whether deep underground in mines or one hundred metres above the ground in a wind turbine. Find out more about the strengths that helped us forge our good reputation and get to know our company group.

Dr. Paul Rheinländer, CEO of the
Eickhoff Group, at the company's
headquarters in Bochum

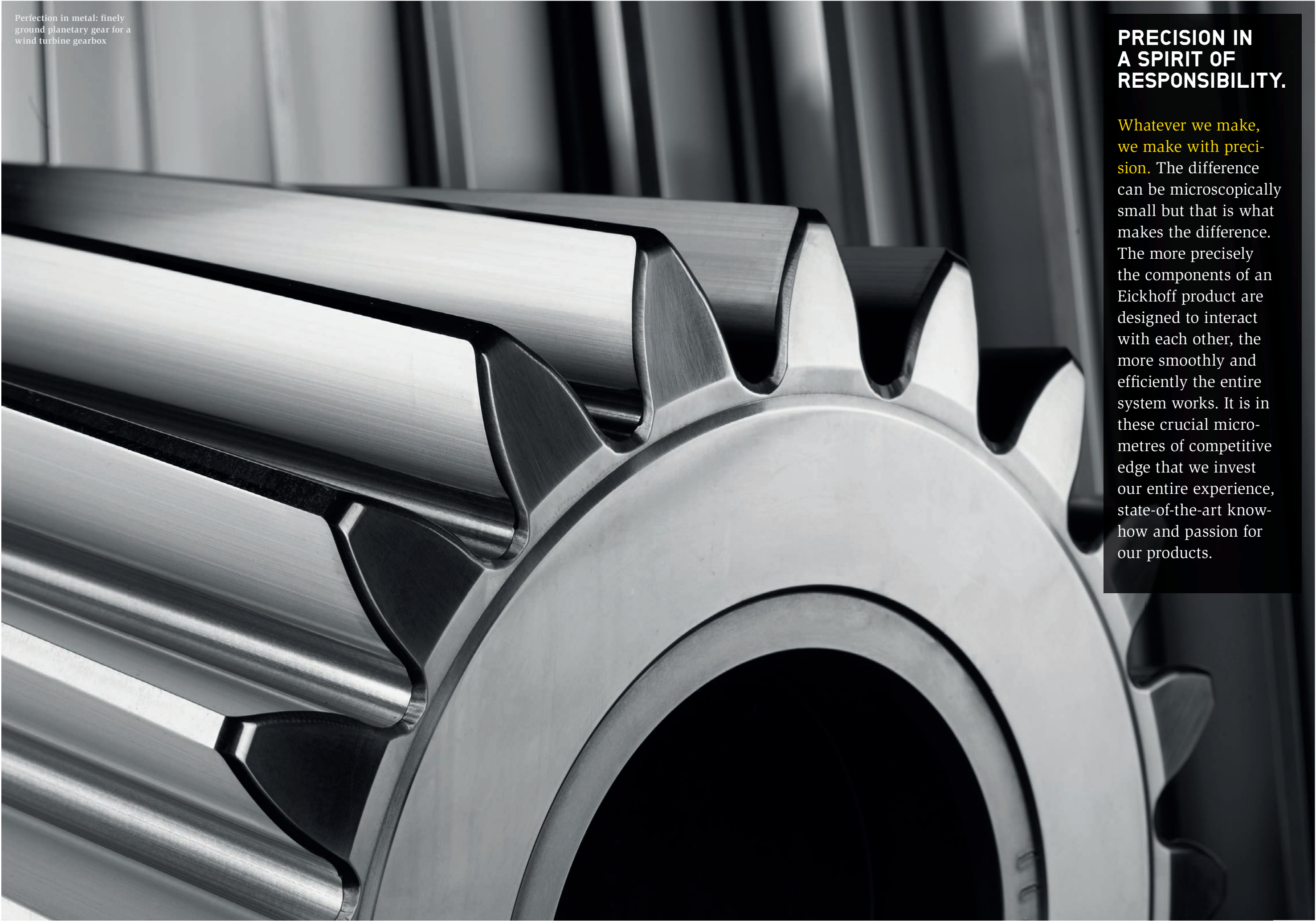


EXPERIENCE CREATES VALUES.

We are pioneers in the field of mechanical engineering. The foundry established by Carl Eickhoff in 1864 has become a high-tech company – in the heart of the Ruhr District and at two additional production sites in Germany. This continuity enables us to develop our products and services for a global market.

Historical engraving
of the Eickhoff plant in
Bochum, 1864





Perfection in metal: finely
ground planetary gear for a
wind turbine gearbox

PRECISION IN A SPIRIT OF RESPONSIBILITY.

Whatever we make,
we make with precision. The difference
can be microscopically
small but that is what
makes the difference.
The more precisely
the components of an
Eickhoff product are
designed to interact
with each other, the
more smoothly and
efficiently the entire
system works. It is in
these crucial micro-
metres of competitive
edge that we invest
our entire experience,
state-of-the-art know-
how and passion for
our products.

RELIABILITY AS A PRINCIPLE

Decades of continual use. Mining machinery, gearboxes and foundry equipment from Eickhoff work reliably and have extremely long service lives – even under highly stressful conditions for both materials and engineering. The fact that we manufacture to the highest quality standards really pays off for our customers. They know they can rely on very low downtimes and outstanding efficiency. Moreover, our production facilities ensure that spare parts will still be available, even decades later.

Extremely challenging for both man and machinery: shearer loader SL 500 in action at the Daw Mill Mine, UK



FLEXIBILITY AS STRENGTH.

Our engineers know what you need. At every site in the world we are confronted with a different set of technical challenges and customer requirements. We perfectly tailor our solutions to suit each situation. That is why Eickhoff products are not built on a series basis, but as specially developed one-off versions. We keep on improving and testing our equipment until everything works perfectly. Thanks to our flat hierarchical structures and agile minds, things move quickly from the initial meeting to the finished prototype.



Technical pioneering achievement:
the first bar-cutting machine on the
continent, built by Eickhoff in 1914

INNOVATION GIVES US A COMPETITIVE EDGE.

We turn technical visions into reality. As early as 1914 it was the innovative power of Eickhoff that set new standards in both mining and drive engineering. Today too, good ideas and mature implementation are our greatest assets and enable us to stand at the forefront of the global market. As a current example, our SL 750 EiControlPlus with infrared and radar sensors was awarded the BAUMA Innovation Prize and is one of the most efficient shearer loaders in the world.



The joy of owning an Eickhoff product does not end with its commissioning: our service teams are there when you need them

SERVICE WITH CUSTOMER PROXIMITY.

No matter where you are in the world - and when - we will come to your site as quickly as possible in order to solve any problems that arise. Excellent service is one of our basic principles. With highly trained technicians and a well organised network we ensure that our products are regularly serviced or up and running again as quickly as possible.

OUR PRODUCTS

Built for the trends of the times.

We originally developed our machinery for mining purposes. However, our wealth of experience is meanwhile very helpful in other markets, too. Our strategy is geared to long-term developments, which not only include the growing need for energy and raw materials, but also the growing trend towards urbanisation and the demand for renewable energy. Eickhoff Bergbautechnik GmbH produces shearer loaders and continuous miners for underground coal mining, Schalker Eisenhütte Maschinenfabrik GmbH manufactures locomotives for ore and coal mining, and meanwhile also state-of-the-art hybrid locomo-

tives for urban underground trains. Eickhoff Antriebstechnik GmbH has entered an important market with the manufacture of gearboxes for wind turbines. Eickhoff Gießerei GmbH and Eickhoff Maschinenfabrik GmbH develop new materials and processes for all areas of our Group that meet the constantly rising standards for contemporary ferrous materials.



Eickhoff SL 1000 shearer loader
Currently the best performing shearer loader in the world

Eickhoff EICOGear 3.6
Wind turbine with 3.6 MW generator output

Eickhoff planetary gearbox
Industrial gearboxes for the mining sector

Schalke 105t mining locomotive
Manufactured for CODELCO, Chile

OUR
MANAGEMENT
TEAM

Many heads – one passion.

The Eickhoff Group comprises several operational companies under the roof of one family-managed holding, Gebr. Eickhoff Maschinenfabrik u. Eisengießerei GmbH. Our companies act independently in their respective markets. Within the Group they benefit from synergies in purchasing and administration as well as through an intensive exchange of ideas and knowledge.

Their common aim is to continue our tradition and build on our good reputation.

1 Dr. Andreas Merchiers
Schalker Eisenhütte
Maschinenfabrik GmbH

2 Dr. Ralf Wittor
Eickhoff Antriebstechnik GmbH
Eickhoff Wind Power GmbH

3 Dipl.-Oec. Rainer Lohmann
Gebr. Eickhoff Maschinenfabrik u.
Eisengießerei GmbH

4 Dr. Paul Rheinländer
Gebr. Eickhoff Maschinenfabrik u.
Eisengießerei GmbH

5 Dipl.-Ing. Ralf Funke
Eickhoff Gießerei GmbH

6 Dipl.-Ing. Karl-Heinz Rieser
Eickhoff Bergbautechnik GmbH

**7 Dipl.-Ing. Dipl.-Wirtsch.-Ing.
Stefan Rittershaus**
Eickhoff Maschinenfabrik GmbH



Employer for generations:
working for Eickhoff often
stays in the family

OUR EMPLOYEES

The secret of our quality. The calibre of Eickhoff products depends on the people who are responsible for them. Competence in design, precision in production and a watchful eye when testing quality – these are the key factors. The team members at Eickhoff are proud of the perfection of their products.

THE EICKHOFF RECIPE FOR SUCCESS

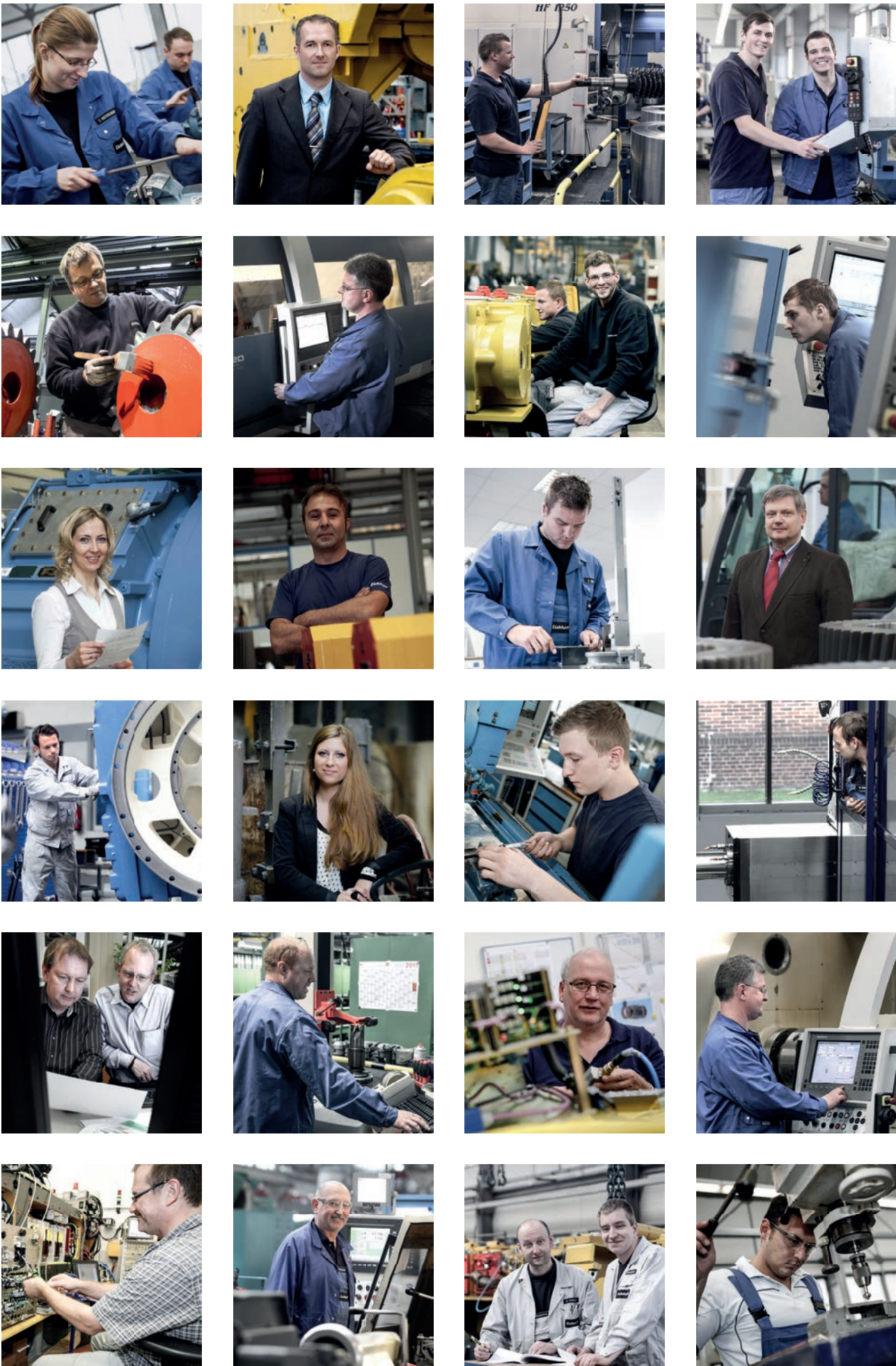
As a traditional, family-managed company, Eickhoff has always greatly valued every single employee. We trust in the abilities of our people and give them responsibility. This policy gives ambitious, young, talented people at Eickhoff the chance to show their potential and prove themselves in various projects. Our hierarchical structures are flat and therefore provide the ideal opportunity for development and advancement. The best proof is the fact that most of our executives began their careers at Eickhoff.

Eickhoff also enjoys a good reputation at universities that train engineers. In order to cement this reputation and recruit new, promising, talented staff, the company founded the Eickhoff Prize at the Ruhr Universität Bochum, which is presented on an annual basis for outstanding promotions in the fields of mechanical and electrical engineering.

We also invest in up-and-coming talent in the fields of production and assembly and offer training in a wide variety of trades from mechatronics technician to technical model constructors for foundries and cutting machine operators for milling and turning technology. We do this in a state-of-the-art training workshop and multi-media facilities for workshop training as well as in separate laboratories for pneumatics, CNC engineering and SPS programming. Our facilities cover a total of 800 square metres, exclusively dedicated to technical training. Eickhoff is well known, throughout the region and beyond, for the high standard of its qualified training.

We also cater for the well-being of our staff. In-house health programmes as well as our own company doctor are just as much a part of what we offer our employees as a varied diet in the company canteen. The result is a satisfied, highly motivated team of employees who we expect a lot from but who are also fostered and encouraged. These factors all go towards explaining why the majority of staff work for Eickhoff for very long periods. In many cases the employer even stays in the family and it is not at all unusual that families remain with Eickhoff over several generations.

The many faces of Eickhoff:
highly committed people are
the soul of the company



Sponsoring the youth:
Children on an Eickhoff shearer
in the Mining Museum

OUR COMMITMENT.

A keen eye on the future. The main focus of our activities is the long-term development of the company as an integral part of society. This means we take responsibility and commit ourselves to fostering our young talent, for education, for the region and the culture. This self-image and commitment comes from within and is actively practiced by our entire staff on a daily basis.

BEYOND THE BOUNDS OF THE COMPANY

We are an employer that looks after its people. But Eickhoff is, of course, a lot more than that. We have been part of the region for around 150 years, an entire environment with its many generations of people. As an integral part of this environment our responsibility stretches far beyond the bounds of our production buildings.

For example, when Eickhoff establishes a company children’s day nursery, half of the places are reserved for youngsters from the neighbourhood. Or if company property is temporarily not being used, it is rented to the well-known off-theatre project “TheaterTotal” at low cost as part of a cultural sponsoring project.

This type of commitment, however, only seems selfless at first glance. We are firmly convinced that in the end both sides benefit from this policy. For example, our support for the Bochum orchestra academy in setting up a music centre is also a great overall benefit to Bochum as an industrial centre. This, in turn, makes the city more attractive for highly qualified specialists and executives who are interested in joining our company.

In this way we embed the Kaizen principle of permanent improvement not only in our daily business, but also in everything we do towards the outside.

By the way, we also transport this self-image to our selected suppliers and other business partners, helping Eickhoff to remain an aware, caring partner within society.



1 “Tradition does not mean preserving the ashes, but keeping the flame alive.” (Jean Jaurès) “Lichttore” (gates of light) by Ludger Hinse at the entrance of the Bochum headquarters of Eickhoff GmbH

2 Music as an industrial centre factor: the Bochum orchestra academy

3 Harmonious community: the Eickhoff company choir

4 Promoted newcomers: Eickhoff scholarship holders at the Ruhr Uni Bochum

5 Created space: the children’s day nursery as a place for talent to develop

German subsidiaries:

Gebr. Eickhoff Maschinenfabrik u. Eisengießerei GmbH
Am Eickhoffpark 1
44789 Bochum
GERMANY
Phone: +49 234 975-0
Fax: +49 234 975-2445
kontakt@eickhoff-bochum.de

Eickhoff Bergbautechnik GmbH
Am Eickhoffpark 1
44789 Bochum
GERMANY
Phone: +49 234 975-0
Fax: +49 234 975-2676
kontakt@eickhoff-bochum.de

Eickhoff Antriebstechnik GmbH
Am Eickhoffpark 1
44789 Bochum
GERMANY
Phone: +49 234 975-0
Fax: +49 234 975-2579
getriebe@eickhoff-bochum.de

Eickhoff Gießerei GmbH
Am Eickhoffpark 1
44789 Bochum
GERMANY
Phone: +49 234 975-2760
Fax: +49 234 975-2411
giesserei@eickhoff-bochum.de

Eickhoff Wind Power GmbH
Eickhoffstr. 1
01665 Klipphausen
GERMANY
Phone: +49 35204 271-0
Fax: +49 35204 271-300
kontakt-ewp@eickhoff-bochum.de

Schalker Eisenhütte
Maschinenfabrik GmbH
Am Eickhoffpark 1
44789 Bochum
GERMANY
Phone: +49 234 975-0
Fax: +49 234 975-1103
info@schalke.eu

Subsidiaries worldwide:

Eickhoff Polonia Ltd. Sp. z.o.o.
ul. Lwowska 38
40-389 Katowice
POLAND
Phone: +48 32 2066 01-0
Fax: +49 32 3558 75-4
eickhoff_sekretariat@onet.pl

Eickhoff Office Beijing
Room A0708, Huixin Plaza
N°. 8 Beichen East Road
Chaoyang District
Beijing 100101
P. R. CHINA
Phone: +86 10 51662022
Fax: +86 10 51662021
eickhoff_bj@126.com

Tianjin Eickhoff Bergbautechnik Co., Ltd.
No. 19 Saida No. 2 Avenue
Xiqing Economic
Development Area
Tianjin 300385
P. R. CHINA
Phone: +86 22 23962699
Fax: +86 22 23962698
eickhoff_liuxin@126.com
eickhoff_gaoyanzhang@126.com

ООО „EickhoffBel“
Minsk Region
Soligorsk County
Station „Kalij-1“, PO Box 81
223710 Soligorsk
BELARUS
Phone: +375 17420088-9
Fax: +375 17420068-8
ms_eickhoffbel@hotmail.com

ООО „Eickhoff Sibir“
Kemerovo Region
Gogolstr. 25
652700 Kiselyovsk
Siberia
RUSSIA
Phone: +7 38464 20131
Fax: +7 38464 20131
eickhoff@nvkz.net

ООО „Eickhoff“
Wolokolamskoje Chaussee 73
Office 207
125424 Moscow
RUSSIA
Phone: +7 4953 6343 17
Fax: +7 4953 6343 17
eickhoff-moscow@mail.ru

Eickhoff Australia Pty. Ltd.
41, Prince William Drive
Seven Hills, NSW 2147
AUSTRALIA
Phone: +61 29674 6733
Fax: +61 29674 6581
admin@eickhoff.com.au

Eickhoff Corporation
200 Park West Drive
Pittsburgh, PA 15275
USA
Phone: +1 412 788-1400
Fax: +1 412 788-4100
sales@eickhoff.us

Eickhoff (Pty.) Ltd.
12 Strauss Crescent
1422 Wadeville
Germiston
SOUTHAFRICA
Phone: +27 11 9025630
Fax: +27 11 9025830
sales@eickhoff.co.za

Publisher:

Gebr. Eickhoff Maschinenfabrik
u. Eisengießerei GmbH

Picture credits:

avpgroup, Düsseldorf,
Hans Blossey, Hamm,
Gebr. Eickhoff
Maschinenfabrik
u. Eisengießerei GmbH,
Bochum,
Michael Godehardt,
Bochum